






Halo™ - SCANSTRUT® Mounts

Radar Fit Model	P/N	Description	Image
HALO-3/4/6	APT6003	150mm (6") Aluminium PowerTower® for all open array	
http://www.scanstrut.com/products/product-page.php?range_id=10002&type=Powerboats			
HALO-3/4	DPT-40-SO3	Dual PowerTower® for 40cm satcom + 4' open array radars	
http://www.scanstrut.com/products/product-page.php?range_id=10003&type=Powerboats			
HALO-3/4	DPT-60-SO3	Dual PowerTower® for 60cm satcom + up to 4' open array radars	
http://www.scanstrut.com/products/product-page.php?range_id=10003&type=Powerboats			

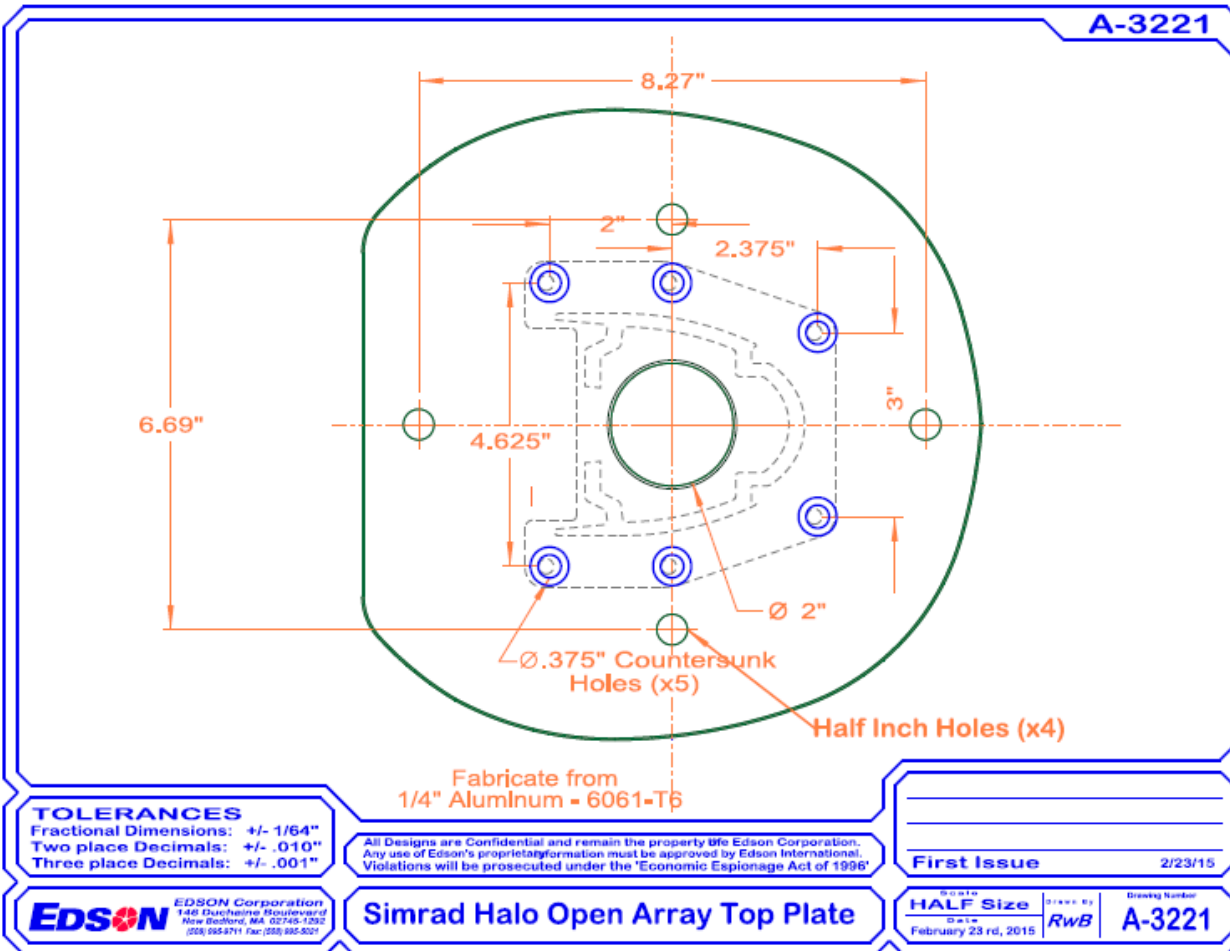
► These are available from Scanstrut direct.



Halo™ - EDSON® Mounts

This new Halo mounting plate Edson part number 68575.

- ▶ It fits:
 - 68110 6" Tower for open arrays
 - 68120 12" Tower for open arrays
 - 68250 Dual tower for open arrays and sat domes
 - 68350 Triple tower
- ▶ The 3/4' Halo array will work on all of the towers listed.
- ▶ The 6' Halo array will only work on:
 - 68110 6" Tower for open arrays
 - 68120 12" Tower for open arrays







http://www.edsonmarine.com/marinestore/index.php?main_page=product_info&cPath=87_322_324_335&products_id=1799

▶ These are available from Edson direct.



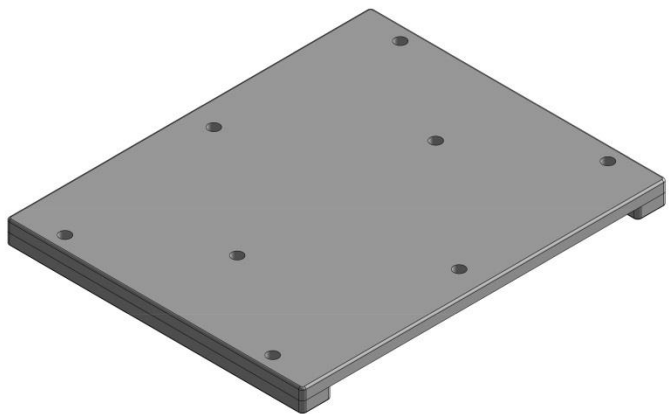
Halo™- EDSON® Mounts

Radar Fit Model	P/N	Description	Image
HALO-3/4/6 http://www.edsonmarine.com/marinestore/index.php?main_page=product_info&cPath=87_322_323_327&products_id=1767	68110 with plate 68575	150mm (6") Tower for all open array	
HALO-3/4/6 http://www.edsonmarine.com/marinestore/index.php?main_page=product_info&cPath=87_322_323_327&products_id=1618	68120 with plate 68575	300mm (12") Tower for all open array	
HALO-3/4 http://www.edsonmarine.com/marinestore/index.php?main_page=product_info&cPath=87_322_323_329&products_id=1630	68250 with plate 68575	Dual Tower for open arrays and sat domes	
HALO-3/4 http://www.edsonmarine.com/marinestore/index.php?main_page=product_info&cPath=87_322_323_330&products_id=1632	68350 with plate 68575	Triple Tower	

▶ These are available from Edson direct.



Halo™- EDSON® Mounts

Radar Fit Model	P/N	Description	Image
HALO-3/4/6	68950	Hardtop Mounting Plate	 A 3D rendering of a rectangular, grey metal mounting plate. The plate has eight circular holes arranged in two rows of four. It has a slightly raised edge on one side.

http://www.edsonmarine.com/marinestore/index.php?main_page=product_info&cPath=87_322_323_382&products_id=1800

▶ This is available from Edson direct.

Halo™ - Seaview® Mounts



Easy 3 step process to build a modular mount for Halo Radars.

- ▶ Step 1: Pick your style of mount
- ▶ Step 2: Select the top mounting plate to fit Halo
- ▶ Step 3: Choice optional accessory





Halo™ - Seaview® Mounts

Step 1: Select a Mount for Halo

FORWARD LEANING

- 18" - 24" closed dome radars
- Up to 6' open array radars using 5" mount only



PART NUMBERS

PMF-57-M1 5" (127mm) tall forward leaning mount

AFT LEANING

- 18" - 24" closed dome radars
- Up to 6' open array radars using 5" mount only



PART NUMBERS

PMA-57-M1 5" (127mm) tall aft leaning mount

▶ These are all available from Seaview direct.

PMA-DM2-M2

- Up to 4.5' open array radars
- 16" - 24" satdomes



PMA-DM3-M1

- Up to 4.5' open array radars
- 16" - 18" satdomes



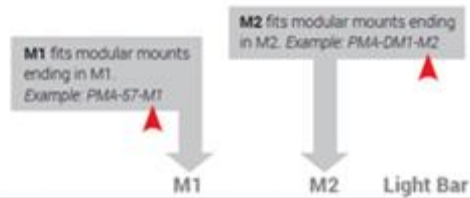
ARCH-2M2

- Up to 4.5' open array radars
- 16" - 24" satdomes
- Cameras



Halo™ - Seaview® Mounts

Step 2: Select a Top Plate for Halo



SIMRAD MODELS	PART NUMBERS		
3G, 4G	ADA-R1	N/A	LTB-R
DX64S	ADA-R2	N/A	LTB-R
HALO (1,127mm / 3' 7")	ADA-R1 + ADA-HALO3	N/A	LTB-OA
HALO (1,431mm / 4' 7")	ADA-R1 + ADA-HALO3	N/A	LTB-OA
HALO (2,038mm / 6' 7")	ADA-R1 + ADA-HALO3	N/A	LTB-OA6
TX06S	ADA-R1	N/A	LTB-OA
TX10S	ADA-R1	N/A	LTB-OA6

The Seaview top plates are made from a pre-drilled aluminum plate that has been incased in a UV resistant ABS plastic. Drill templates come with all Seaview top plates. Simply drill the holes that are marked to your specific Simrad electronic. This makes for a very clean installation with no unnecessary holes.



Use ADA-R1 + ADA-HALO3 SKU for all length Halo models

Step 3: Select accessories – Light bars, etc.

► For all Halo mounts, go to http://seaviewglobal.com/system/attachments/Simrad_Catalog_ver1.pdf



Halo™ - Seaview® Mounts

Adapter Plates and Wedges: A Special Adapter plate and wedge is available

- ▶ Simrad HALO special adapter plate is a great solution when replacing an existing Simrad 3G/4G, Raymarine or Garmin closed dome radar. Mounting holes pick up these existing radar brand domes **and our new Simrad HALO open array mount**. All Halo holes are inside the plate with no drill holes required in the boat itself in the Halo mounting area. Very useful for OEMs in tight center console top channels.



- ▶ These are available from Seaview direct.



PART NUMBERS	
RW4-2	3G, 4G
RW4-6	DX64S
RW4-7	HALO (1,127mm / 3' 7")
RW4-7	HALO (1,431mm / 4' 7")
RW4-7	HALO (2,038mm / 6' 7")
RW4-5	TX06S, TX10S

4° Direct mount radar wedge
 3-4° is most commonly need to compensate for planing attitude. This is why Seaview only offers the 4° direct mount wedge.

- ▶ Use ADA-HALO2 for all length Halo models

- ▶ If a wedge is needed, use RW4-7 for all length Halo models